

# Valvult - High performance ball valve

## H-9000 - TWO-PIECE FULL PORT FLANGED BALL VALVE

### MATERIALS OF CONSTRUCTION

No.	Part name	Material	Quantity
1*	Body	ASTM A351 Gr. CF8M / ASTM A216 Gr. WCB	1
2*	Cap	ASTM A351 Gr. CF8M / ASTM A216 Gr. WCB	1
3	Ball	ASTM A351 Gr. CF8M	1
4	Anti-static stem	A276 Type 316 (Note 1)	1
5	Ball seat	PTFE	2
6	Body seal	PTFE	1
7	Stud	A193 Gr. B8 / A193 Gr. B7	4-20
7A	Nut	A194 Gr. 8 / A194 Gr. 2H	4-20
10	Stem seal	TFM1600	1
11	Stem packing	PTFE	1 set
12	Thrust washer	50% SS powder / 50% PTFE	1
13	Gland	304SS	1
14	Belleville disc spring	Stainless steel	2
15	Lock saddle	Stainless steel	1
16	Stem nut	304SS	1-2
17	Stop bolt	Stainless steel	1-2
18	Handle DN 15 - 80 (NPS 1/2 - 3)	304SS	1
19	Triangle stopper DN 100 - 200 (NPS 4 - 8)	Stainless steel	1
20	Handle adapter DN 100 - 200 (NPS 4 - 8)	Stainless steel	1
21	Handle DN 100 - 200 (NPS 4 - 8)	SGP Zn plating	1
22	Locking plate	Stainless steel	1
23	Handle sleeve	Vinyl	1

\* For DIN valves, the body and cap material will be 1.4408/1.0619.

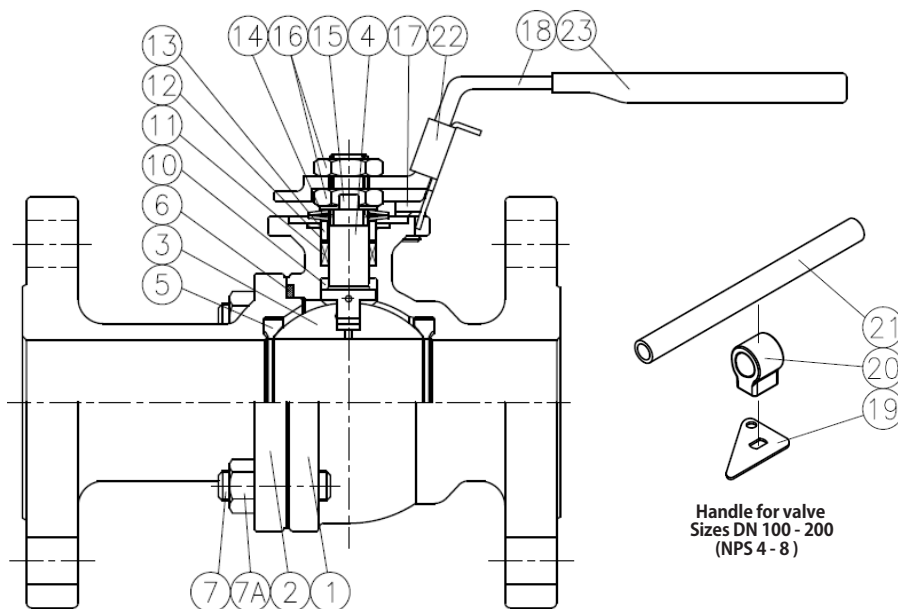
\* For JIS valves, the body and cap material will be SCS14A/SCPH2

\* Note 1: Standard Stem material

Body material	Size	Class 150, 10K, PN 10/16	Class 300, 20K, PN 25/40
CF8M, SCS14A, 1.4408	NPS 1/2 - 4	316	316
	NPS 6	316	A276-S31803
	NPS 8	A276-S31803	A276-S31803
WCB, SCPH2, 1.0619	NPS 1/2 - 4	316	316
	NPS 6	316	A276-S31803
	NPS 8	A276-S31803	A276-S31803

### FEATURES

- Complies with TA Luft fugitive emission requirements
- ISO 15848-1 CO3 qualified
- Blow-out proof and Anti-static design
- API 6D design
- ISO 5211 mounting plate
- Valve pressure rating:
  - ASME Class 150/300
  - DIN PN 10/16/25/40
  - JIS 10K/20K
- Two piece, split body ball valve with flanged ends
- Carbon steel or stainless steel bodies
- Locking device
- Various seat material options
- Investment cast body
  - DN 15 - 100 (NPS 1/2 - 4)
- Sand cast body
  - DN 125 - 200 (NPS 5 - 8)
- Size range  
DN 15 - 200 (NPS 1/2 - 8) Full bore



# Valvult - High performance ball valve

## H-9000F - TWO-PIECE FULL PORT FIRE-SAFE FLANGED BALL VALVE

### MATERIALS OF CONSTRUCTION

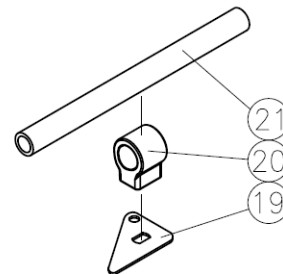
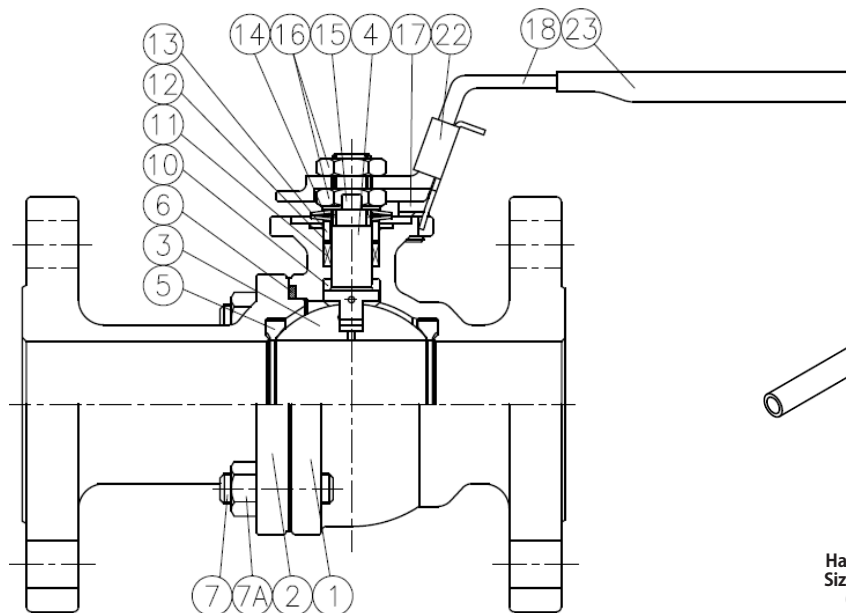
No.	Part name	Material	Quantity
1*	Body	ASTM A351 Gr. CF8M / ASTM A216 Gr. WCB	1
2*	Cap	ASTM A351 Gr. CF8M / ASTM A216 Gr. WCB	1
3	Ball	ASTM A351 Gr. CF8M	1
4	Anti-static stem	A276 Type 316 (Note 1)	1
5	Ball seat	PTFE	2
6	Body seal	Graphite	1
7	Stud	A193 Gr. B8 / A193 Gr. B7	4-20
7a	Nut	A194 Gr. 8 / A194 Gr. 2H	4-20
10	Stem seal	Graphite	1
11	Stem packing	Graphite	1
12	Thrust washer	50% SS powder / 50% PTFE	1
13	Gland	304SS	1
14	Belleville disc spring	Stainless steel	2
15	Lock saddle	Stainless steel	1
16	Stem nut	304SS	1-2
17	Stop bolt	Stainless steel	1-2
18	Handle DN 15 - 80 (NPS 1/2 - 3)	304SS	1
19	Triangle stopper DN 80 - 200 (NPS 3 - 8)	Stainless steel	1
20	Handle adapter DN 80 - 200 (NPS 3 - 8)	Stainless steel	1
21	Handle DN 100 - 200 (NPS 4 - 8)	SGP Zn plating	1
22	Locking plate	Stainless steel	1
23	Handle sleeve	Vinyl	1

\* For DIN valves, the body and cap material will be 1.4408/1.0619.

\* For JIS valves, the body and cap material will be SCS14A/SCPH2

\* Note 1: Standard stem material

Body material	Size	Class 150, 10K, PN 10/16	Class 300, 20K, PN 25/40
CF8M, SCS14A, 1.4408	NPS 1/2 - 4	316	316
	NPS 6	316	A276-S31803 316
	NPS 8	A276-S31803	A276-S31803
WCB, SCPH2, 1.0619	NPS 1/2 - 4	316	316
	NPS 6	316	A276-S31803
	NPS 8	A276-S31803	A276-S31803



Handle for valve  
Size DN 80 - 200  
(NPS 4 - 8)

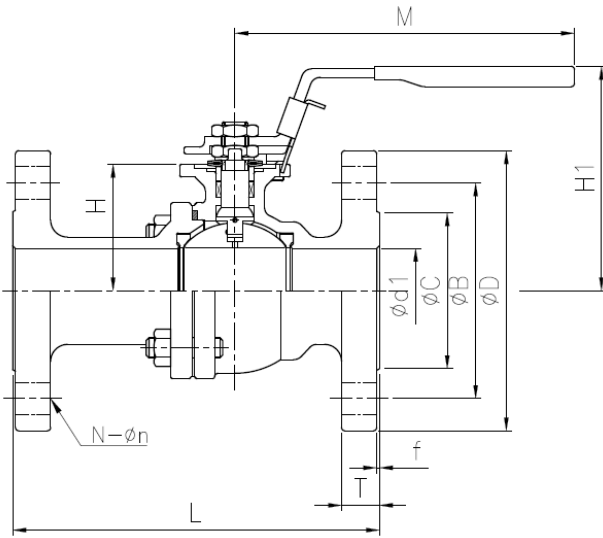
### FEATURES

- Blow-out proof stem
- ISO 5211 mounting plate
- Anti-static design
- API 6D design
- Valve pressure rating:
  - ASME Class 150/300
  - DIN PN 10/16/25/40
  - JIS 10K/20K
- Two-piece, split-body ball valve
- Flexible graphite body seal and stem packing for Hi-temp resistance
- Fire tested to API 607 7th edition / ISO 10497:2010
- Size range
  - DN 15 - 200 (NPS 1/2 - 8)
  - Full bore

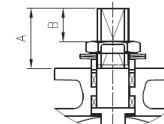
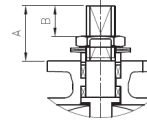
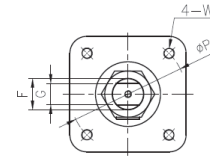
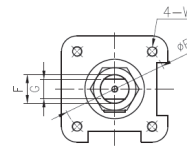


# Valvult - High performance ball valve

## H-9000& H-9000F - TWO-PIECE FULL PORT FLANGED BALL VALVE

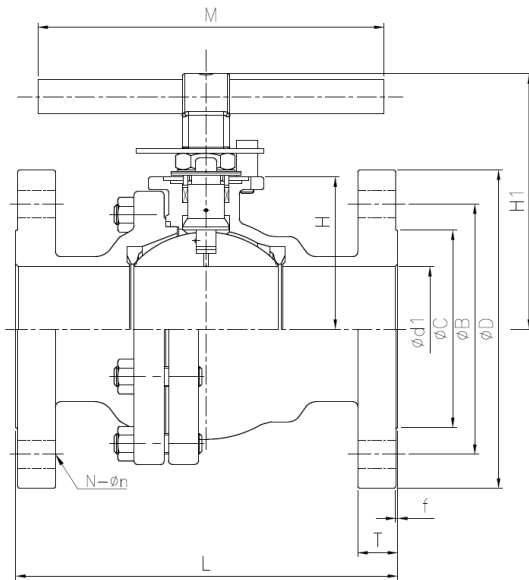


DN 15-80 (NPS 1/2 - 3)



DN 15 - 80  
(NPS 1/2 - 3)

DN 100 - 200  
(NPS 4 - 8)



DN 100-200 (NPS 4 - 8)

### DIMENSIONS (mm)

NPS	DN	A	ØP	F	G	B	W	M	H	H1±1
1/2	15	20.5	42	9.7	6.3	12.2	M5	135	38.5	83.0
3/4	20	20.7	42	9.7	6.3	12.6	M5	135	42.0	87.0
1	25	21.6	50	11.2	8.0	14.2	M6	165	51.5	99.0
1-1/4	32	21.6	50	11.2	8.0	14.2	M6	165	56.2	103.0
1-1/2	40	26.0	70	16.0	9.5	16.2	M8	200	65.5	120.0
2	50	26.0	70	16.0	9.5	16.2	M8	200	74.5	129.5
2-1/2	65	43.0	102	22.3	17.0	24.2	M10	250	88.0	164.8
3	80	43.5	102	22.3	17.0	25.2	M10	250	101.0	180.3
4	100	49.0	102	28.6	17.0	30.0	M10	595	122.0	207.0
5	125	53.6	102	28.6	17.0	33.0	M10	595	140.0	226.0
6	150	65.0	125	34.0	23.0	39.0	M12	800	167.0	281.0
8	200	65.0	125	34.0	23.0	39.0	M12	1100	203.0	317.0

# Valvult - High performance ball valve

## H-9000& H-9000F - TWO-PIECE FULL PORT FLANGED BALL VALVE

### DIN PN 10/16/25/40 DIMENSIONS (mm)

NPS	DN	PN	ØB	ØC	ØD	L	*L	N	T	Øn	Ød1	f	Wt (kg)	
													Series27(F4)	Series1(F1)
1/2	15	10/16/25/40	65	45	95	115	130	4	16	14	15	2	2.42	2.46
3/4	20	10/16/25/40	75	58	105	120	150	4	18	14	20	2	3.24	3.08
1	25	10/16/25/40	85	68	115	125	160	4	18	14	25	2	4.42	4.18
1-1/4	32	10/16/25/40	100	78	140	130	180	4	18	18	32	2	6.10	5.62
1-1/2	40	10/16/25/40	110	88	150	140	200	4	18	18	40	2	7.94	7.40
2	50	10/16/25/40	125	102	165	150	230	4	20	18	50	3	10.50	9.76
2-1/2	65	10/16	145	122	185	170	290	4	18	18	65	3	17.00	16.60
		25/40	145	122	185	170	290	8	22	18	65	3	18.30	16.22
3	80	10/16	160	138	200	180	310	8	20	18	80	3	21.50	21.40
		25/40	160	138	200	180	310	8	24	18	80	3	24.90	21.34
4	100	10/16	180	158	220	190	350	8	20	18	100	3	34.00	27.72
		25/40	190	162	235	190	350	8	24	22	100	3	37.20	31.42
5	125	10/16	210	188	250	325	400	8	22	18	125	3	50.00	48.00
		25/40	220	188	270	325	400	8	26	26	125	3	60.00	57.00
6	150	10/16	240	212	285	350	480	8	22	22	150	3	78.00	73.00
		25/40	250	218	300	350	480	8	28	26	150	3	92.00	82.00
8	200	10	295	268	340	400	600	8	24	22	200	3	124.00	98.00
		16	295	268	340	400	600	12	24	22	200	3	124.00	98.00
		25	310	278	360	400	600	12	30	26	200	3	164.00	148.00
		40	320	285	375	400	600	12	34	30	200	3	164.00	148.00

L Dimensions EN 558 Series 27(F4)

\*L Dimensions EN 558 Series 1(F1)

### ASME 150/300 DIMENSIONS (mm)

NPS	DN	ØB		ØD		L		N		T		Øn		ØC	Ød1	f	Wt (kg)	
		150	300	150	300	150	300	150	300	150	300	150	300				150	300
1/2	15	60.5	66.5	89.0	95.0	108.0	140.0	4	4	11.2	14.3	16.0	16.0	35	15	1.6	1.82	2.20
3/4	20	70.0	82.5	98.6	117.0	117.0	152.0	4	4	11.2	15.9	16.0	19.0	43	20	1.6	2.12	3.25
1	25	79.5	89.0	108.0	124.0	127.0	165.0	4	4	11.2	17.5	16.0	19.0	51	25	1.6	3.04	4.48
1-1/2	40	98.5	114.5	127.0	156.0	165.0	190.0	4	4	14.2	20.7	16.0	22.0	73	40	1.6	5.80	8.70
2	50	120.5	127.0	152.5	165.0	178.0	216.0	4	8	15.9	22.3	19.0	19.0	92	50	1.6	8.36	11.20
2-1/2	65	139.5	149.0	178.0	190.0	190.0	241.0	4	8	17.5	25.4	19.0	22.0	105	65	1.6	15.00	19.00
3	80	152.5	168.0	190.5	210.0	203.0	283.0	4	8	19.1	28.6	19.0	22.0	127	76	1.6	19.92	28.00
4	100	190.5	200.0	229.0	254.0	229.0	305.0	8	8	23.9	31.8	19.0	22.0	157	100	1.6	32.90	43.72
5	125	215.9	234.9	254.0	279.4	355.6	381.0	8	8	23.9	34.9	22.2	22.2	186	125	1.6	49.00	71.00
6	150	241.3	269.9	279.4	317.5	393.7	403.4	8	12	25.4	36.6	22.2	22.2	216	150	1.6	75.00	100.00
8	200	298.4	330.2	342.9	381.0	457.2	501.7	8	12	28.6	41.3	22.2	25.4	270	200	1.6	128.00	172.00

Face to face dimensions to ASME B16.10

### JIS 10K/20K DIMENSIONS (mm)

NPS	DN	ØB		ØC		ØD		L		N		T		Øn		J	K	Ød1	f	H	Wt (kg)	
		10K	20K	10K	20K	10K	20K	10K	20K	10K	20K	10K	20K	10K	20K						10K	20K
1/2	15A	70	70	51	51	95	95	108	140	4	4	12	14	15	15	-	-	15	1	38.5	2.10	2.36
3/4	20A	75	75	56	56	100	100	117	152	4	4	14	16	15	15	-	-	20	1	42.0	2.50	2.80
1	25A	90	90	67	67	125	125	127	165	4	4	14	16	19	19	-	-	25	1	51.5	3.86	4.55
1-1/4	32A	100	-	76	-	135	-	140	-	4	-	16	-	19	-	-	-	32	2	56.2	5.50	-
1-1/2	40A	105	105	81	81	140	140	165	190	4	4	16	18	19	19	-	-	40	2	65.5	6.48	7.16
2	50A	120	120	96	96	155	155	178	216	4	8	16	18	19	19	-	-	50	2	74.5	8.40	8.92
2-1/2	65A	140	140	116	116	175	175	190	241	4	8	18	20	19	19	-	-	65	2	90.0	13.80	15.50
3	80A	150	160	126	132	185	200	203	283	8	8	18	22	19	23	-	-	76	2	101.0	18.60	23.24
4	100A	175	182	151	160	210	225	229	305	8	8	18	24	19	23	-	-	100	2	122.0	27.36	34.10
5	125A	210	225	185	195	250	270	356	381	8	8	20	26	23	25	161	393	125	2	140.0	46.00	69.00
6	150A	240	260	212	230	280	305	394	403	8	12	22	28	23	25	190	513	150	2	167.0	73.00	92.00
8	200A	290	305	262	275	330	350	457	502	12	12	22	30	23	25	190	549	201	2	203.0	120.00	139.00

Note: We could offer 2pc flanged ball valve size up to NPS 12, please consult with factory.