

Valvaut - High performance ball valve

H-7100T - THREE-PIECE HIGH PURITY CLEAN BALL VALVE

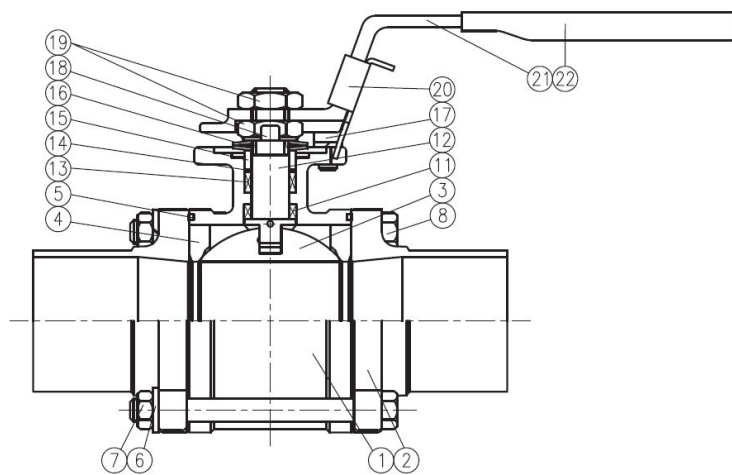
MATERIALS OF CONSTRUCTION

No.	Part name	Material	Quantity
1	Body	CF8M, 1.4408	1
2	Cap	CF3M, 1.4409	2
3	Ball	ASTM A351 Gr. CF8M	1
4	Ball seat	PTFE	2
5	Body seal	PTFE	2
5A	Seat ring	ASTM A351 Gr. CF8M - DN125-300 (NPS 5-12)	1
6	Bolt Washer	304SS	4-12
7	Bolt nut	A2-70	4-12
8	Bolt	A2-70	Note 1
11	Stem seal	TFM1600	1 Set
12	Anti-static Stem	A276 TYPE 316	1
13	Stem packing	PTFE	1 Set
14	Thrust washer	50% S.S powder / 50% PTFE	1
15	Gland	304SS	1
16	Belleville disc spring washer	304SS	2
17	Stop bolt	Stainless steel	1-2
18	Lock washer	Stainless steel	1
19	Stem nut	304SS	1-2
20	Locking plate	Stainless steel	1
21	Handle	304SS / SGP Zn plating	1
22	Handle sleeve	Vinyl	1
23	Cap seal	PTFE	1
24	Triangle stopper	Stainless steel	1
25	Handle adapter	304SS - DN 100 (NPS 4)	1

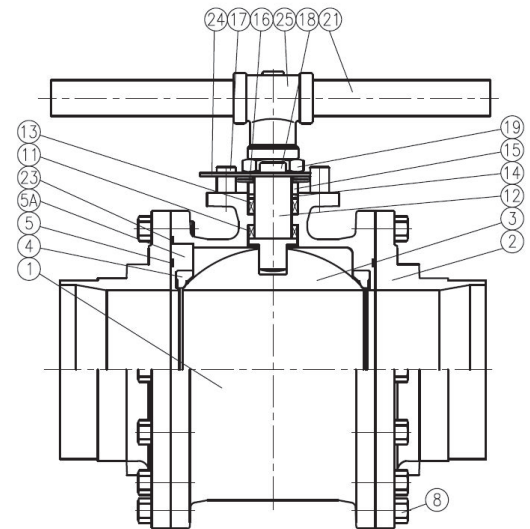
Note 1: DN 15 - 65 (NPS ½ - 2½) x 4 pcs, DN 80 - 100 (NPS 3 - 4) x 6 pcs.

FEATURES

- Complies with TA Luft/ISO-15848-1 requirements
- Blow-out proof shaft
- ISO 5211 top mounting plate
- Three-piece swing out design
- Valve pressure rating:
DN 15 - 40 (NPS 1/2 - 1-1/2) - PN 63
DN 50 - 100 (NPS 2 - 4) - PN 40
- End connections: butt weld, tubing and Tri-Clamp
- All wetted parts are polished to 180 Grit (0.51 to 0.64 micron)
- All extended weld ends in CF3M/DIN 1.4409 material allows orbital welding in place
- High purity cleaning (oil free) and packing
- Bosses for purge connections are built into the end cap
- Size range DN 15 (NPS ½) to DN 300 (NPS 12)
- Helium leak detection calibrated to 1x10⁻⁵ std cm³/sec
- Individually bagged
- Cavity filler seat option available



Sizes DN 15 - 80 (NPS 1/2 - 3)



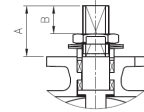
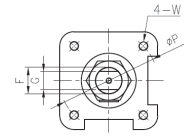
Sizes DN 100 (NPS 4)

Valvaut - High performance ball valve

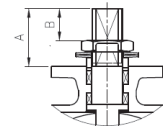
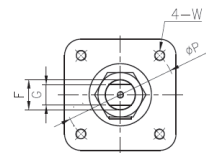
H-7100T - THREE-PIECE HIGH PURITY CLEAN BALL VALVE

DIMENSIONS (mm)

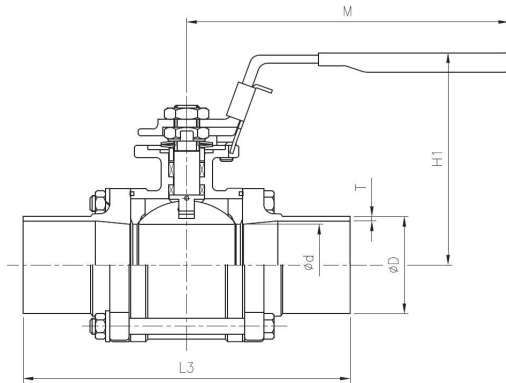
NPS	DN	V	L1	L2	L4	L5	ØK	ØN	*Ød	*Ød1	*ØD	Wt (kg)
												T-clamp
½	15	3.63	93.0	139.7	26.5	35.0	25.0	20.2	9.40	10.22	12.70	0.75
¾	20	3.63	105.2	139.7	33.2	36.0	25.0	20.3	15.75	15.75	19.05	1.02
1	25	2.85	113.9	160.7	37.7	38.0	50.4	43.6	22.10	22.10	25.40	1.54
1-1/2	40	2.85	125.0	190.4	58.0	46.0	50.4	43.6	34.80	34.80	38.10	-
2	50	2.85	146.0	203.2	69.6	46.0	63.9	56.3	47.50	47.50	50.80	3.08
2-1/2	65	2.85	174.0	254.0	86.5	56.0	77.4	70.6	60.20	60.20	63.50	4.54
3	80	2.85	193.0	279.0	102.6	60.0	90.9	83.3	72.90	72.90	76.20	9.32
4	100	2.85	219.4	307.0	125.4	60.0	118.9	110.3	97.38	97.38	101.60	13.15



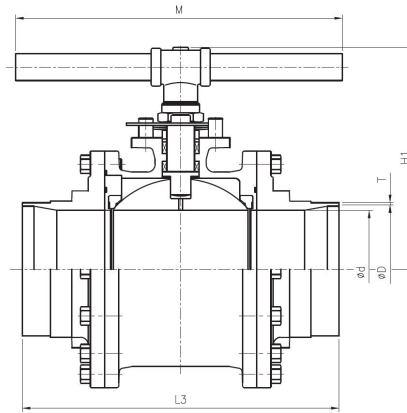
DN 15 - 80
(NPS ½ - 3)



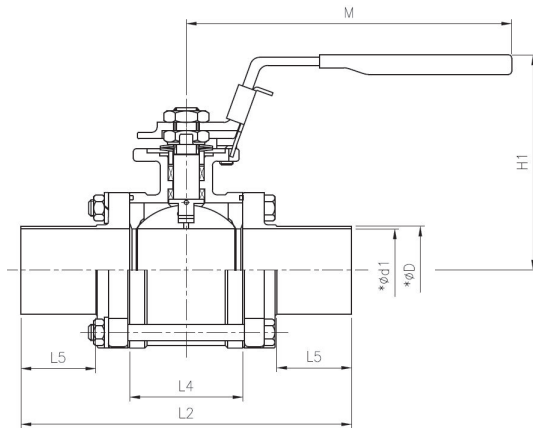
DN 100
(NPS 4)



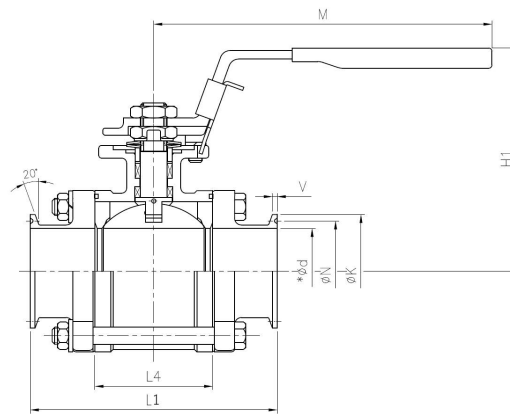
Extended butt welded
DN15-80(NPS 1/2~3)
SCH#5 / SCH#10



DN100 (NPS 4)
SCH#5 / SCH#10



Orbital tube welding



T-clamp

NPS	DN	A	B	G	ØP	W	F	Ød	T			M	H1±1	L3	Wt (kg)		
									5S	10S	ØD				Ext. BW	X	Y
½	15	19.8	12.5	6.3	42	M5	9.7	15.0	1.65	2.1	21.7	135	83.0	139.7	0.98	-	-
¾	20	20.0	12.5	6.3	42	M5	9.7	20.0	1.65	2.1	27.2	135	87.0	139.7	1.18	-	-
1	25	21.0	13.7	8.0	50	M6	11.2	25.0	1.65	2.8	34.0	165	99.0	154.2	1.80	-	-
1-1/4	32	21.4	13.2	8.0	50	M6	11.2	32.0	1.65	2.8	42.7	165	101.0	165.1	2.64	-	-
1-1/2	40	24.6	13.9	9.5	70	M8	16.0	38.0	1.65	2.8	48.6	200	117.0	190.5	3.90	-	-
2	50	25.1	13.9	9.5	70	M8	16.0	50.8	1.65	2.8	60.5	200	126.0	203.2	5.42	-	-
2-1/2	65	41.6	26.1	15.0	102	M10	19.1	65.0	2.10	3.0	76.3	250	161.5	254.0	10.42	-	-
3	80	42.0	25.4	15.0	102	M10	19.1	76.0	2.10	3.0	89.1	250	176.5	279.4	15.74	-	-
4	100	47.8	29.2	17.0	102	M10	28.6	97.4	2.10	3.0	114.3	595	205.5	317.5	23.06	-	-